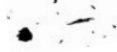


20

Shirazeh Houshiary · *Rapture*

White pencil with black and white
Aquacryl on canvas, 2007
28cm (h) 28cm (w)
Estimate: £3,000—£6,000
Generously donated by the Artist
and Lisson Gallery, London.



Shirazeh Houshiary (Iran, b. 1955) left her native country in 1973. She graduated from the Chelsea School of Art, London in 1979 and has lived and worked in London ever since. Houshiary's paintings stand at the very edge of perception, the signs both emerging from nothingness and simultaneously melting back into it, creating a space for unveiling the elemental and the invisible from the unknown. Yet these paintings obsessively and painstakingly record a process of obstinate mark-making, of personal gestures inscribing time, of checking the pressure of one's presence against the resistant surface. Although her work is strongly influenced by the mysticism of Islamic culture, particularly the poetry of Jalalu'ddin Rumi, a thirteenth-century Sufi mystic, Shirazeh's haunting imagery shares a Gothic yearning to give form to heightened states of consciousness.

Houshiary was a nominee for the 1994 Turner Prize.

(We would like to draw your attention to the fact that the artist has requested specific conditions regarding the re-selling of this work in the future. For further information see Resale on p.127)

